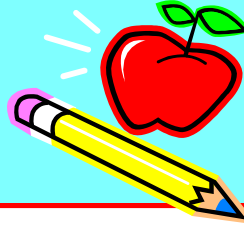


NEW PARENT INFO



Meadowthorpe
Elementary

1710 Forbes Road
Lexington, KY 40511
859-381-3521

Welcome to Meadowthorpe!

Frequently Asked Questions

Q. How do I drop off my child?

A. Children arrive by bus, car and walking. Children may be dropped off between 7:15am-7:45am at the front of the building. Your child will be greeted by a school employee and assisted out of the car. It really helps if your child sits in the back seat, on the passenger side and has their belongings ready to go. The car line moves quickly and several cars unload at one time. If you drop your child off after 7:45am, you will have to walk your child to the office for a tardy slip to enter class.

The process is similar for afternoon pick-ups, but you will need a car number displayed in your front window to match your child's backpack number with your car number. A school employee will be checking off numbers as several cars load at once. The car line begins to move at the 2:35pm dismissal and is usually complete by 2:45pm. If you arrive after the car line is dispersed, you will need to enter the school to sign out your child. It is very important you are in the car line before the 2:35pm dismissal time. You can register for a car line number at orientation or in the main office.

Q. Where do I park if I want to volunteer, have lunch with my child or attend a PTA meeting?

A. The 'upper' parking lot is the best place to park when visiting. As you enter the campus, the lot is on your right.

Q. Can I walk my child to class?

A. Only on the first day, you can walk your child to class. The school asks that you use the car line for drop-off on all other days. If you need to assist your child with a large project that is due, it is best to park in the upper parking lot and walk your child to the front door.

Q. When I need to enter the school building, what do I do?

A. All visitors should use the front door. Push the call button to the right of the door and you will need to identify yourself. You will hear a buzz sound that will release the door handle for you to enter the school. Enter the office on the immediate right. If you are having lunch with your child, you will need to sign in as a visitor. If you are volunteering, you will need to sign in as a volunteer. Both of these sign in sheets also have stickers nearby for you to wear while you are in the school, so you can easily be identified. If you are picking up a child early, signing in a tardy child, or assisting a sick child, the front office staff can assist you. Do not go past the lobby without stopping in the office first.

Q. Can I occasionally have lunch with my child?

A. Yes! Make sure to arrive prior to your child's assigned lunch time, sign in and wait for your child's class in the lobby or in the cafeteria at the parent lunch table (near the black/white awning with round tables). Fayette County Schools have a strict policy that only sack lunches (no fast food) can be brought by visitors to the cafeteria or you may purchase your lunch with exact change. Your child is allowed to ask 1 friend to join you at the parent lunch table. Please make sure to be aware of the 25 minute lunch period and let your child join the class line when their class begins to dismiss from the cafeteria.

Meadowthorpe Parent FAQ's

Q. What is the tag on my child's backpack?

A. These tags are required by the District and identify your child, mode of transportation and other important info. Please leave these tags attached to the backpack all year long.

Q. My child lost his jacket. How can I find it?

A. Items can be identified at the 'Lost and Found' area located in the cafeteria. Ask your child to look for the item in this area. Make sure to label any item your child brings or wears to school.

Q. What weather conditions will cancel recess?

A. Recess is held for 20 minutes after your child's lunch and monitored by your child's teacher. There are 2 playgrounds, one for K/1 primary classes and the other playground for 2nd-5th graders. Recess is usually held outside, unless the temperature is below 32 degrees or inclement weather.

Q. What are 'specials'?

A. All children rotate through a 'Specials Schedule' which includes Guidance/Library, PE, Music, Art, Computer Literacy, Science and Chinese, depending on the grade level of your child. Each day, your child will attend one of these 'specials'.

Q. How do I pay for lunch?

A. Look for info coming home regarding the Mealpay Plus program, which allows you to pay by credit card or send in cash or check to the cafeteria. You can monitor your account balance through this online program.

Q. How do I find the lunch schedule?

A. You can access the school calendar, teacher web pages, lunch schedule, PTA events and many other items at the school web site: www.fcps.net/meadowthorpe.

Q. What resources are available for my child?

A. Meadowthorpe employs a half-time nurse, full-time Guidance Counselor and 1 day a week psychologist. Of course, if your child needs any immediate attention, qualified staff are always in the building. The Family Resource Center is also a great place if you are in need of children's clothing, tutoring or any services to help your child be successful each day at Meadowthorpe.

Q. What is the SBDM Council?

Site Based Decision Making Council is a state-mandated council consisting of 3 teachers, 2 parents and the principal who govern the curriculum of Meadowthorpe. The elections for these positions are held each spring.

Q. How do I know my child's grades?

A. Only grades 3-5 receive traditional letter grades and those can be found on the Infinite Campus program online at the school web site. K/1-2nd graders will receive grade cards several times a year, but this will show 'progression'. You should plan to attend a parent/teacher conference one time in the fall term and one time in the spring term to review your child's assessment tests and progress in the classroom. Your child's teacher will contact you regarding these appointments.

FAQ's presented by your Meadowthorpe Parent Teacher Association and is only intended to give basic info. Refer to your FCPS policy guide or FCPS web site for more info. We are excited you are here and hope to meet you soon!